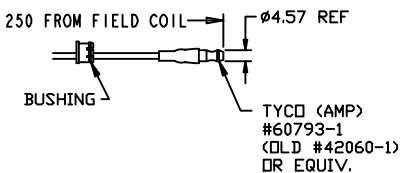
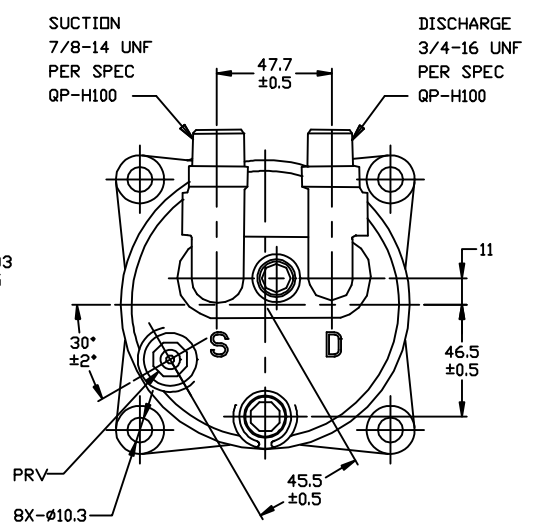
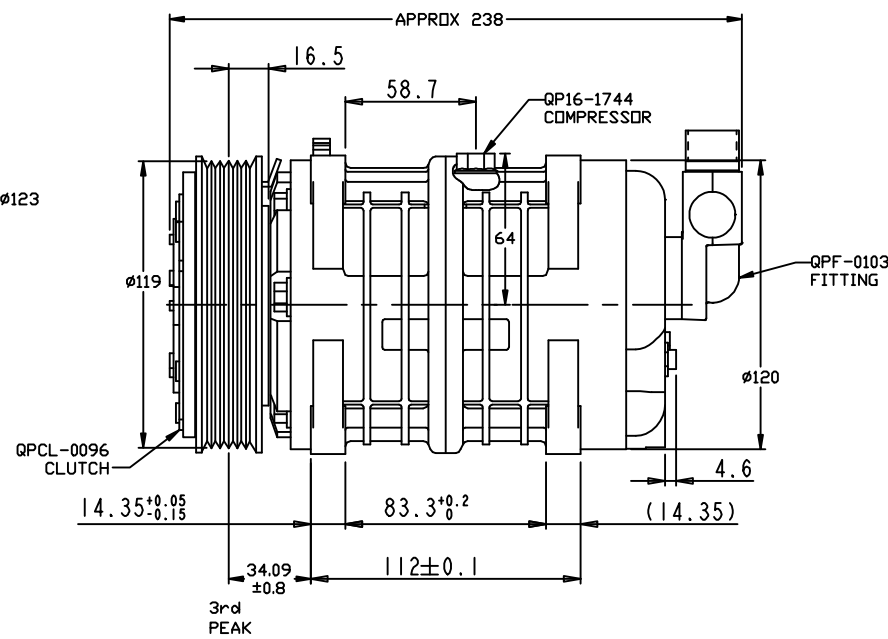
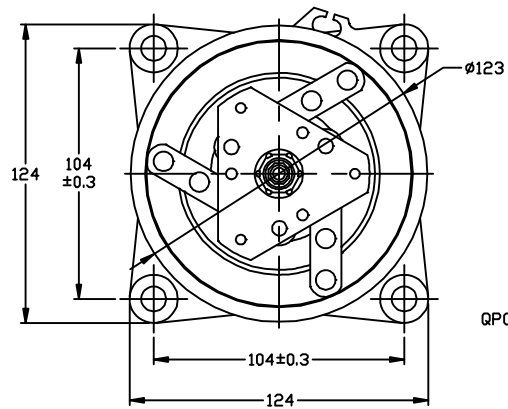


REVISIONS				
CHANGE ORDER	LTR	DESCRIPTION	DATE	APPROVED



TERMINAL LEAD DETAIL



- CLUTCH SPECIFICATIONS:**
- VOLTAGE..... 24 VDC
 - BELT..... PV6
 - STATIC TORQUE
INITIAL..... 35 Nm (3.5 Kgfm)
AFTER BURNISHING..... 49 Nm (5 Kgfm)
 - MAX POWER CONSUMPTION..... 45W @ 25°C
 - ROTATION DIRECTION..... CW OR CCW
 - WEIGHT..... 2.28 Kg

- COMPRESSOR SPECIFICATIONS:**
- MODEL..... QP16
 - NUMBER OF CYLINDERS..... 6
 - BORE X STROKE..... 36 X 26.7 mm
 - DISPLACEMENT..... 162.9 cm³/REV
 - SPEED RANGE..... 700 - 6000 RPM
 - ROTATION DIRECTION..... CW OR CCW
 - REFRIGERANT..... R404a
 - LUBRICANT..... PDE 68 180+20cm3
 - WEIGHT..... 4.7 Kg

UNLESS OTHERWISE SPECIFIED DIMENSIONS ARE IN MM. INTERPRET DIM AND TOL PER ASME Y14.5M - 1994	CAD GENERATED DRAWING, DO NOT MANUALLY UPDATE	
	DRAWN	DATE
	GLB	09/13/10
	CHECKED	
THIRD ANGLE PROJECTION	APPROVED	
	ENG APPVL	
FINISH		

QUE PRODUCTS, LLC

TITLE: COMPRESSOR ASSEMBLY
QP16HD V-3/4 7/8
PV6 119mm 24V LEAF SPRING

SIZE A	CODE IDENT NO	DWG NO	REV
		QP16-1740	

SCALE NONE SHEET 1 OF 1