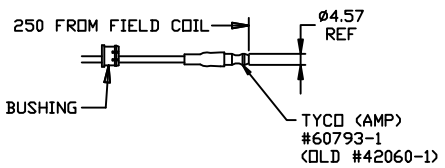
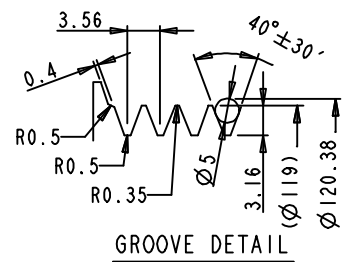
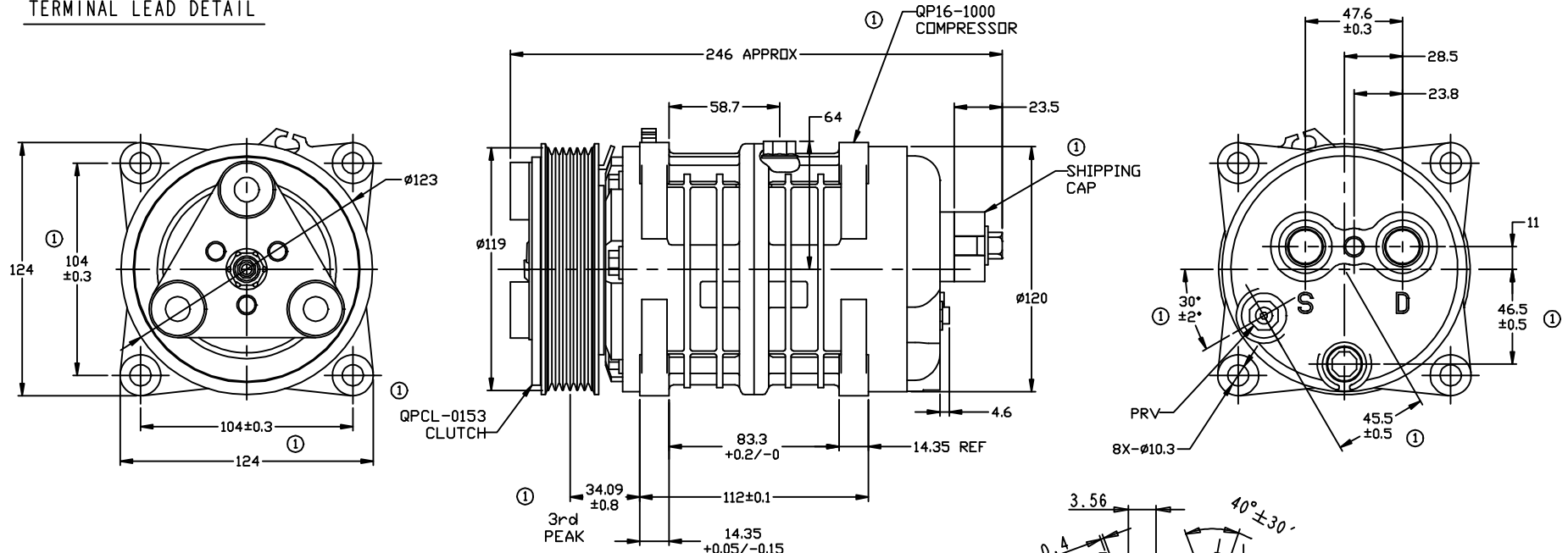


REVISIONS				
CHANGE ORDER	LTR	DESCRIPTION	DATE	APPROVED
Q09035	1	ADDED TOLERANCES & PART NO'S	10/06/09	



TERMINAL LEAD DETAIL



GROOVE DETAIL

- CLUTCH SPECIFICATIONS:**
- VOLTAGE..... 24VDC
 - BELT..... PV6
 - STATIC TORQUE
 INITIAL..... 35 Nm (3.5 Kgfm)
 AFTER BURNISHING..... 49 Nm (5 Kgfm)
 - MAX POWER CONSUMPTION..... 45W @ 25°C
 - ROTATION DIRECTION..... CW OR CCW
 - WEIGHT..... 2.28 Kg

- COMPRESSOR SPECIFICATIONS:**
- MODEL..... QP16
 - NUMBER OF CYLINDERS..... 6
 - BORE X STROKE..... 36 X 26.7 mm
 - DISPLACEMENT..... 162.9 cm³/REV
 - SPEED RANGE..... 700 - 6000 RPM
 - ROTATION DIRECTION..... CW OR CCW
 - REFRIGERANT..... R-134a
 - LUBRICANT..... PAG 46 180+20cm3
 - WEIGHT..... 4.7 Kg

UNLESS OTHERWISE SPECIFIED DIMENSIONS ARE IN MM. INTERPRET DIM AND TOL PER ASME Y14.5M - 1994		CAD GENERATED DRAWING. DO NOT MANUALLY UPDATE		 DECATUR, ILLINOIS	
THIRD ANGLE PROJECTION		DRAWN GLB	DATE 06/23/09		
		CHECKED		SIZE A	CODE IDENT NO
		APPROVED		DWG NO	QP16-1712
FINISH		ENG APPVL		REV	1
SCALE NONE				SHEET 1 OF 1	