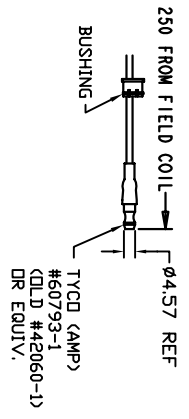
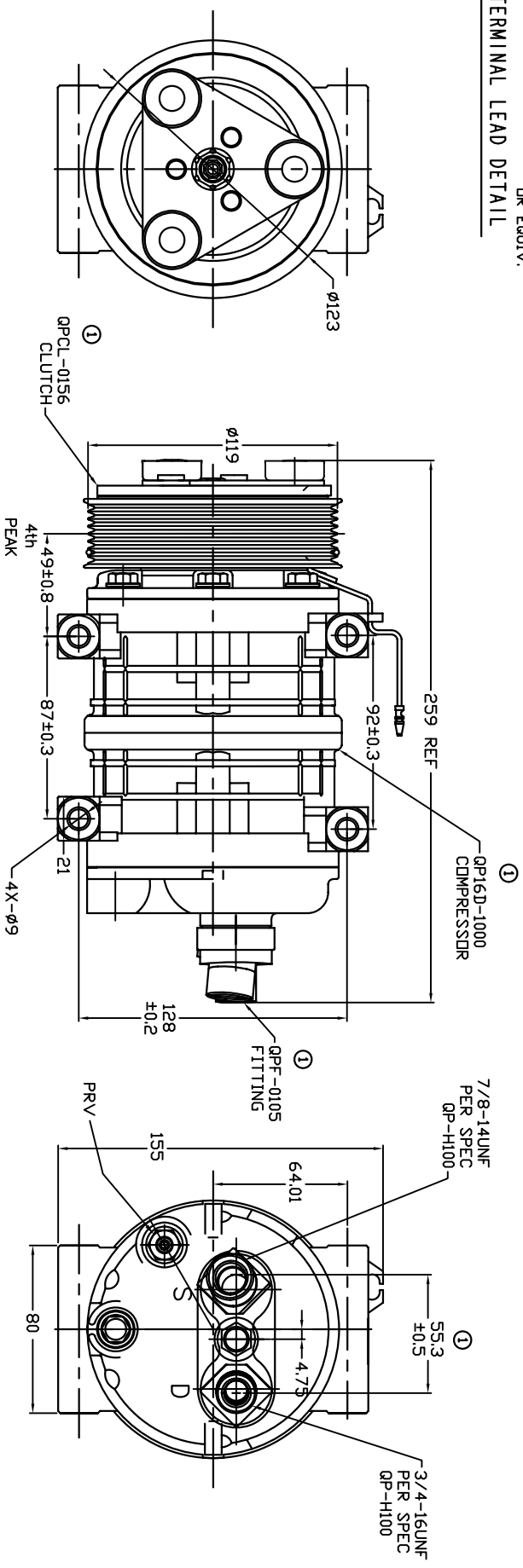


REVISIONS		DATE	APPROVED
CHANGE ORDER	LTR	DESCRIPTION	
009032, 35	1	ADDED TOLERANCES & PART NOS	11/04/09



TERMINAL LEAD DETAIL



CLUTCH SPECIFICATIONS:

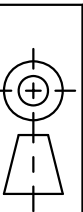
- VOLTAGE..... 24 VDC
- BELT..... PV8
- STATIC TORQUE
 INITIAL..... 35 Nm (3.5 kgfm)
 AFTER BURNISHING..... 49 Nm (5 kgfm)
- MAX POWER CONSUMPTION..... 45W @ 25°C
- ROTATION DIRECTION..... CW OR CCW
- WEIGHT..... 2.25 Kg

COMPRESSOR SPECIFICATIONS:

- MODEL..... QP16HD
- NUMBER OF CYLINDERS..... 6
- BORE X STROKE..... 36 X 26.7 mm
- DISPLACEMENT..... 162.9 cm³/REV
- SPEED RANGE..... 700 - 6000 RPM
- ROTATION DIRECTION..... CW
- REFRIGERANT..... R-134g
- LUBRICANT..... PAG 46 180+20cm³
- WEIGHT..... 4.7 Kg

UNLESS OTHERWISE SPECIFIED
 DIMENSIONS ARE IN MM PER
 INTERPRET DIM AND TOL PER
 ASME Y14.5M - 1994

THIRD ANGLE PROJECTION



DOLE PRODUCTS, LLC

TITLE
 COMPRESSOR ASSEMBLY
 QP16HD H-3/4 7/8
 PV8 119mm 24V 3-EYE

SCALE NONE
 SHEET 1 OF 1

FINISH	APPROVED	ENG APPVL	DATE	REV
			02/23/09	1