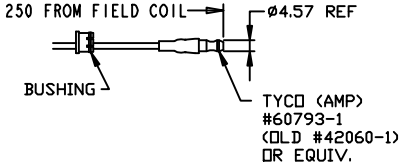
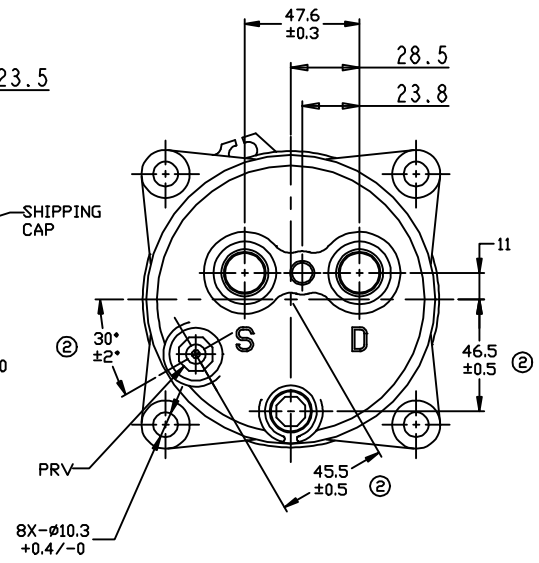
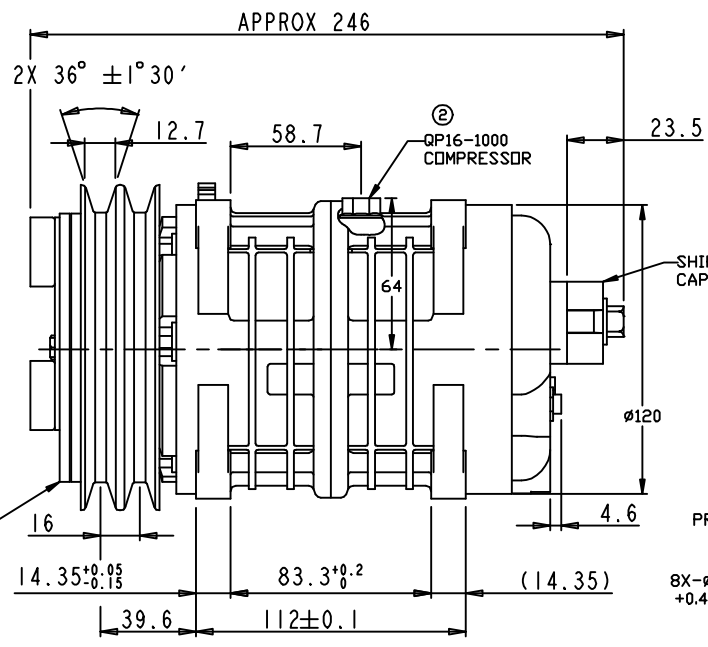
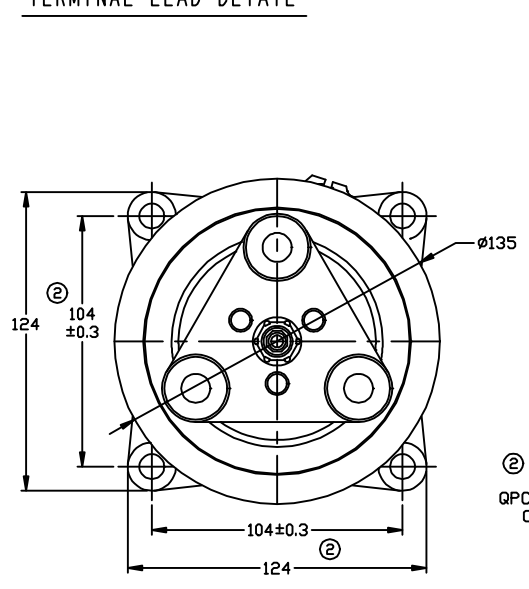


REVISIONS				
CHANGE ORDER	LTR	DESCRIPTION	DATE	APPROVED
Q08023	1	PAG 46 was PAG 100	08/26/08	
Q09035	2	ADDED TOLERANCES & PART NO'S	10/14/09	



TERMINAL LEAD DETAIL



- CLUTCH SPECIFICATIONS:
- VOLTAGE.....12 VDC
 - BELT.....A2
 - STATIC TORQUE
INITIAL.....35 Nm (3.5 Kgfm)
AFTER BURNISHING.....49 Nm (5 Kgfm)
 - MAX POWER CONSUMPTION.....45W @ 25°C
 - ROTATION DIRECTION.....CW OR CCW
 - WEIGHT.....2.25 Kg

- COMPRESSOR SPECIFICATIONS:
- MODEL.....QP16HD
 - NUMBER OF CYLINDERS.....6
 - BORE X STROKE.....36 X 26.7 mm
 - DISPLACEMENT.....162.9 cm³/REV
 - SPEED RANGE.....700 - 6000 RPM
 - ROTATION DIRECTION.....CW OR CCW
 - REFRIGERANT.....R-134a
 - LUBRICANT.....PAG 46 180+20cm³
 - WEIGHT.....4.7 Kg

THIRD ANGLE PROJECTION	UNLESS OTHERWISE SPECIFIED DIMENSIONS ARE IN MM. INTERPRET DIM AND TOL PER ASME Y14.5M - 1994		CAD GENERATED DRAWING. DO NOT MANUALLY UPDATE	
	DRAWN	GLB	DATE	11/26/07
	CHECKED		APPROVED	
	FINISH		ENG APPVL	

QUE PRODUCTS, LLC

TITLE: COMPRESSOR ASSEMBLY
QP16 HD H-PAD
A2 135mm 12V 3-EYE

SIZE A	CODE IDENT NO	DWG NO	REV 2
SCALE: NONE		SHEET 1 OF 1	