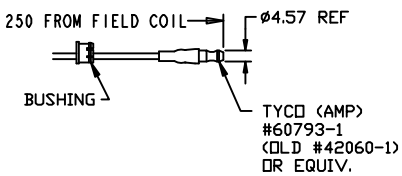
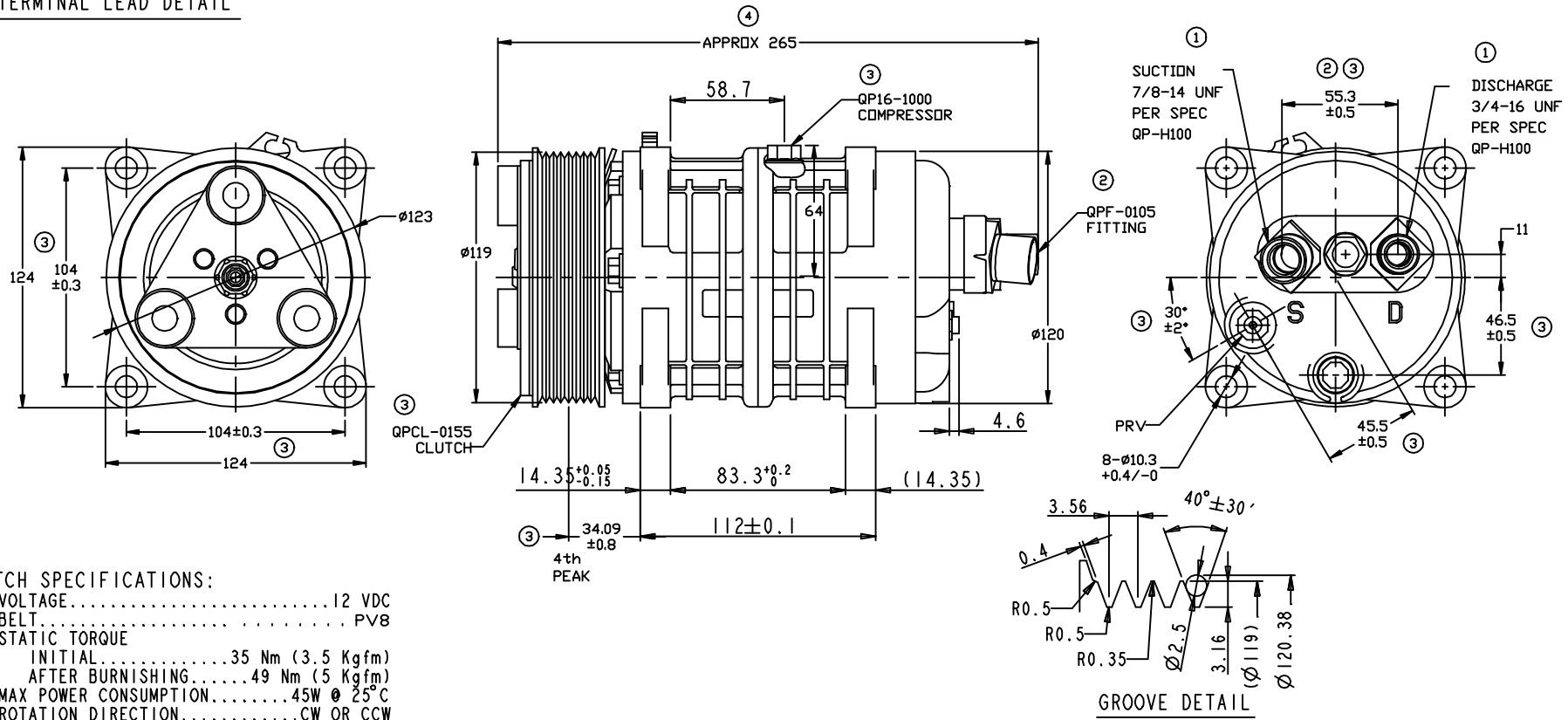


REVISIONS				
CHANGE ORDER	LTR	DESCRIPTION	DATE	APPROVED
Q08023	1	PAG 46 was PAG 100, ADDED: 'QP-H100'	10/01/08	
Q09032	2	55.3 WAS 58, ADDED #QPF-0105	07/23/09	
Q09035	3	ADDED TOLERANCES & PART NO'S	10/14/09	
INSP	4	APPROX 265 WAS APPROX 246	03/30/11	



TERMINAL LEAD DETAIL



- CLUTCH SPECIFICATIONS:**
- VOLTAGE.....12 VDC
 - BELT.....PV8
 - STATIC TORQUE
INITIAL.....35 Nm (3.5 Kgfm)
AFTER BURNISHING.....49 Nm (5 Kgfm)
 - MAX POWER CONSUMPTION.....45W @ 25°C
 - ROTATION DIRECTION.....CW OR CCW
 - WEIGHT.....2.30 Kg

- COMPRESSOR SPECIFICATIONS:**
- MODEL.....QP16HD
 - NUMBER OF CYLINDERS.....6
 - BORE X STROKE.....36 X 26.7 mm
 - DISPLACEMENT.....162.9 cm³/REV
 - SPEED RANGE.....700 - 6000 RPM
 - ROTATION DIRECTION.....CW OR CCW
 - REFRIGERANT.....R-134a
 - LUBRICANT.....PAG 46 180+20 cm³
 - WEIGHT.....4.7 Kg

THIRD ANGLE PROJECTION	UNLESS OTHERWISE SPECIFIED DIMENSIONS ARE IN MM. INTERPRET DIM AND TOL PER ASME Y14.5M - 1994		CAD GENERATED DRAWING. DO NOT MANUALLY UPDATE	
	DRAWN	GLB	DATE	06/21/07
	CHECKED			
	APPROVED			
FINISH	ENG APPVL			

QUE PRODUCTS, LLC
DECATUR, ILLINOIS

TITLE: COMPRESSOR ASSEMBLY
QP16HD H-3/4 7/8
PV8 119mm 12v 3-EYE

SIZE A	CODE IDENT NO	DWG NO	REV 4
SCALE NONE	SHEET 1 OF 1		