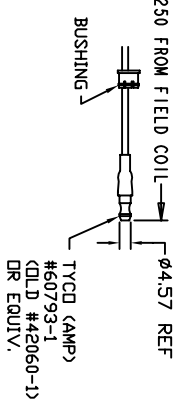
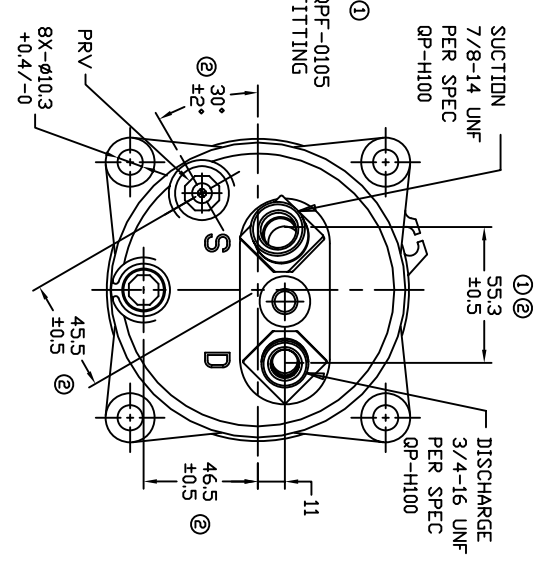
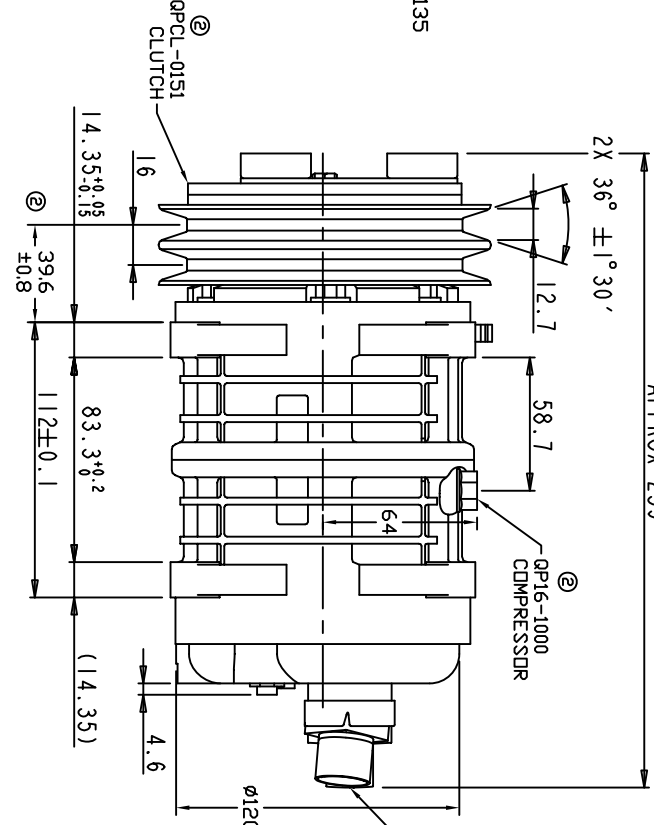
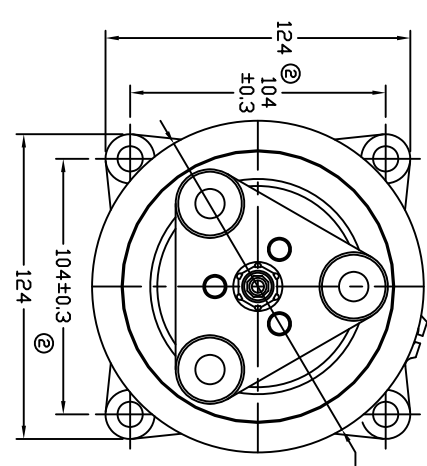


REVISIONS		DATE	APPROVED
CHANGE ORDER	LTR	DESCRIPTION	
009032	1	SS3 WAS 58, ADDED #QP1-0105	07/22/09
009035	2	ADDED TOLERANCES & PART NDS	10/30/09



TERMINAL LEAD DETAIL



CLUTCH SPECIFICATIONS:

- VOLTAGE..... 12 VDC
- BELT..... A2
- STATIC TORQUE..... 35 Nm (3.5 kgfm)
- INITIAL AFTER BURNISHING..... 49 Nm (5 kgfm)
- MAX POWER CONSUMPTION..... 45W @ 25°C
- ROTATION DIRECTION..... CW OR CCW
- WEIGHT..... 2.25 Kg

COMPRESSOR SPECIFICATIONS:

- MODEL..... QP16HD
- NUMBER OF CYLINDERS..... 6
- BORE X STROKE..... 36 X 26.7 mm
- DISPLACEMENT..... 162.9 cm³/REV
- SPEED RANGE..... 700 - 6000 RPM
- ROTATION DIRECTION..... CW OR CCW
- REFRIGERANT..... R-134a
- LUBRICANT..... PAG 46 180+20 cm³
- WEIGHT..... 4.7 Kg

UNLESS OTHERWISE SPECIFIED DIMENSIONS ARE IN MM PER ASME Y14.5M - 1994



CAD GENERATED DRAWING, DO NOT MANUALLY UPDATE

TITLE
 COMPRESSOR ASSEMBLY
 QP16HD H-3/4 7/8
 A2 135mm 12V 3-EYE

THIRD ANGLE PROJECTION	CHECKED	DATE
	APPROVED	

FINISH	ENG APPVL	SCALE: NONE	SHEET 1 OF 1
--------	-----------	-------------	--------------

A

6

5

4

3

2

A

B

C

D

6

5

4

3

2

D