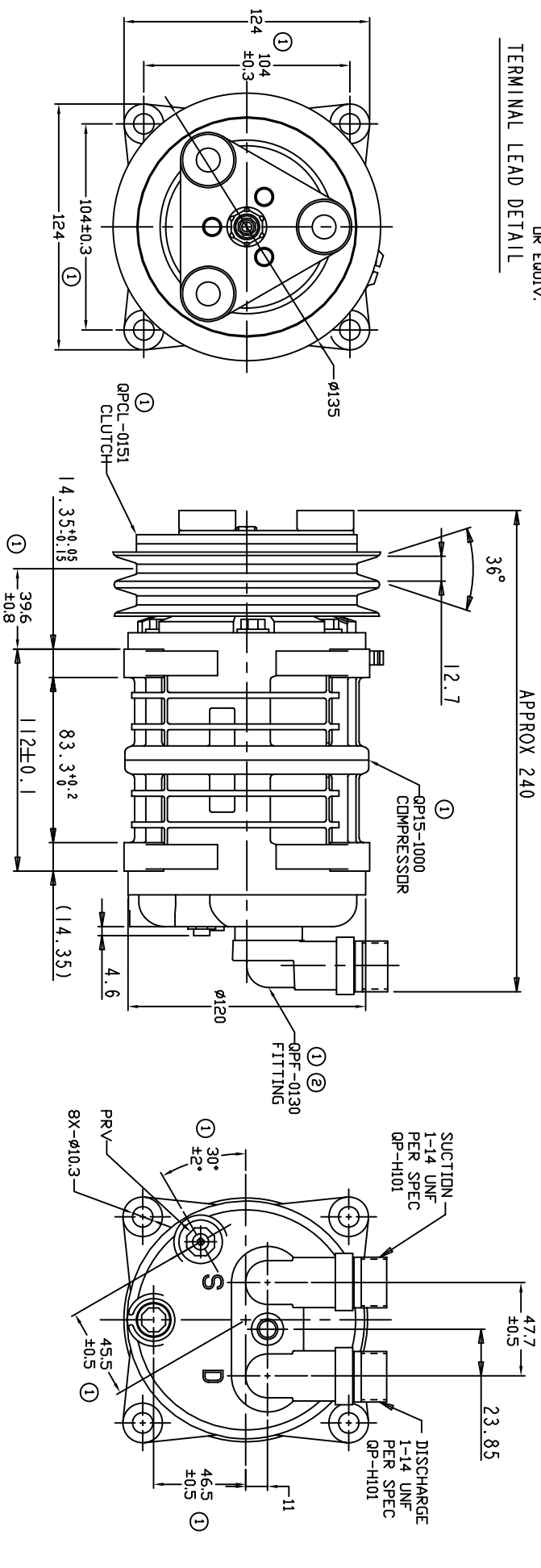


TERMINAL LEAD DETAIL

REVISIONS		DATE	APPROVED
CHANGE ORDER	LTR	DESCRIPTION	
009035	1	ADDED TOLERANCES & PART NOS	10/27/09
ENG	2	TYPD: QPF-0130 WAS QPF-0103	04/09/10



CLUTCH SPECIFICATIONS:

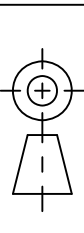
- VOLTAGE.....12 VDC
- BELT.....A2
- STATIC TORQUE.....
INITIAL.....
AFTER BURNISHING.....35 Nm (3.5 kgfm)
- MAX POWER CONSUMPTION.....49 Nm (5 kgfm)
45W @ 25°C
- ROTATION DIRECTION.....CW OR CCW
- WEIGHT.....2.25 kg

COMPRESSOR SPECIFICATIONS:

- MODEL.....QP15HD
- NUMBER OF CYLINDERS.....6
- BORE X STROKE.....36 X 24.0 mm
- DISPLACEMENT.....146.7 cm³/REV
- SPEED RANGE.....700 - 6000 RPM
- ROTATION DIRECTION.....CW OR CCW
- REFRIGERANT.....R-134a
- LUBRICANT.....PAG 46 150+20 cm³
- WEIGHT.....4.4 kg

UNLESS OTHERWISE SPECIFIED
DIMENSIONS ARE IN MM. PER
INTERPRET DIM AND TOL. PER
ASME Y14.5M - 1994

THIRD ANGLE PROJECTION



DAVE PRODUCTS, LLC

TITLE
COMPRESSOR ASSEMBLY
QP15HD V-1x14

SIZE A
CODE IDENT NO DWG NO
A2 135mm 12V 3-EYE
QP15-1316

SCALE NONE
SHEET 1 OF 1

CAD GENERATED DRAWING, DO NOT MANUALLY UPDATE	DATE
GLB	06/27/08

CHECKED
APPROVED

FINISH
ENG APPVL