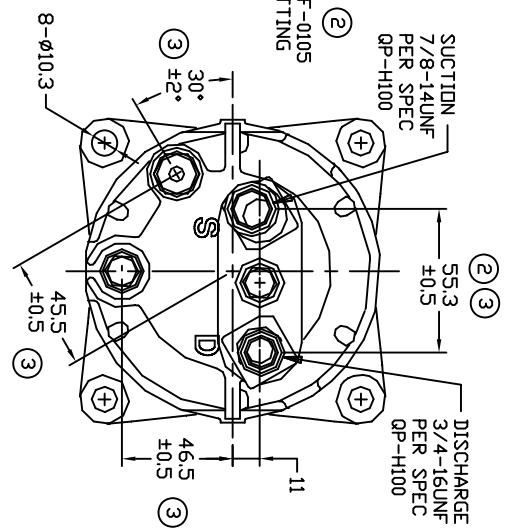
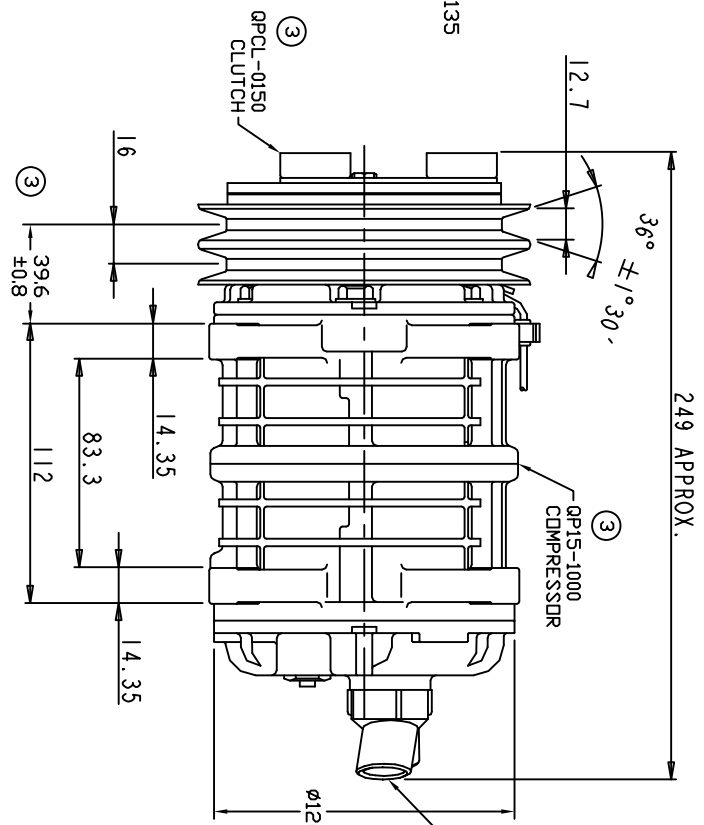
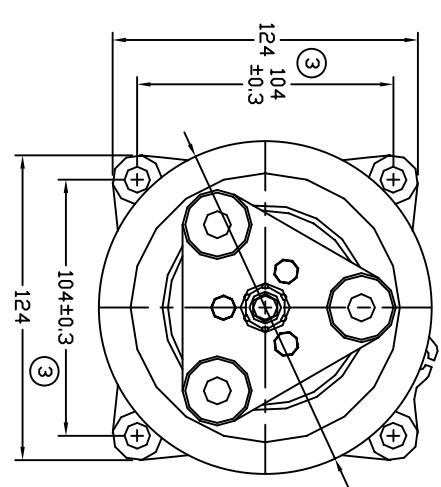


TERMINAL LEAD DETAIL

REVISIONS				
CHANGE ORDER	LTR	DESCRIPTION	DATE	APPROVED
008023	1	PAG 46 was PAG 100	08/21/08	
009032	2	55.3 WAS 58, ADDED #QPF-0105	07/20/09	
009035	3	ADDED TOLERANCES & PART NOS	09/22/09	



CLUTCH SPECIFICATIONS:

- VOLTAGE..... 24 VDC
- BELT..... A2
- STATIC TORQUE..... 35 Nm (3.5 Kgfm)
- INITIAL AFTER BURNISHING..... 49 Nm (5 Kgfm)
- MAX POWER CONSUMPTION..... 45W @ 25°C
- ROTATION DIRECTION..... CW OR CCW
- WEIGHT..... 2.25 Kg

COMPRESSOR SPECIFICATIONS:

- MODEL..... QP-15HD
- NUMBER OF CYLINDERS..... 6
- BORE X STROKE..... 36 X 24.0 mm
- DISPLACEMENT..... 146.7 cm³/REV
- SPEED RANGE..... 700 - 6000 RPM
- ROTATION DIRECTION..... CW OR CCW
- REFRIGERANT..... R-134a
- LUBRICANT..... PAG 46 150+20 cm³
- WEIGHT..... 4.4 Kg

UNLESS OTHERWISE SPECIFIED DIMENSIONS ARE IN MM. PER ASME Y14.5M - 1994



THIRD ANGLE PROJECTION		CAD GENERATED DRAWING; DO NOT MANUALLY UPDATE		TITLE	
FINISH	APPROVED	DRAWN	DATE	COMPRESSOR ASSEMBLY	QPF-15 HD, H-MANIFOLD
ENG APPVL	APPROVED	GLB	06/21/07	A2 135MM 3-EYE 24V	
				SCALE NONE	SHEET 1 OF 1