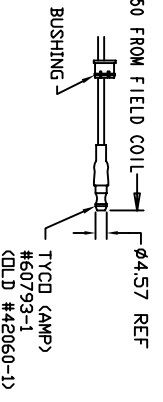
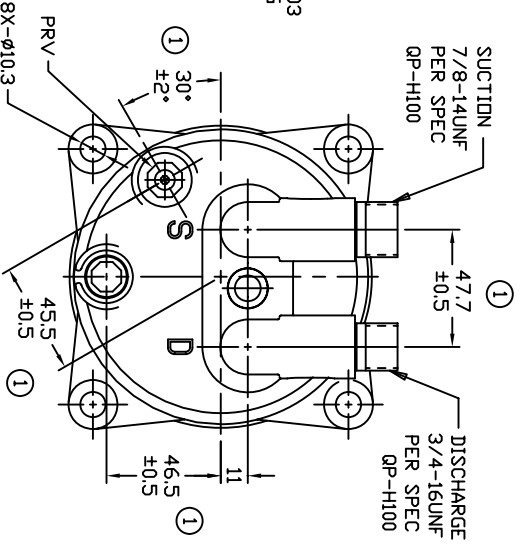
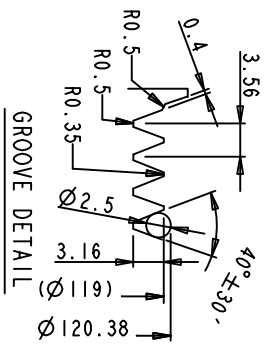
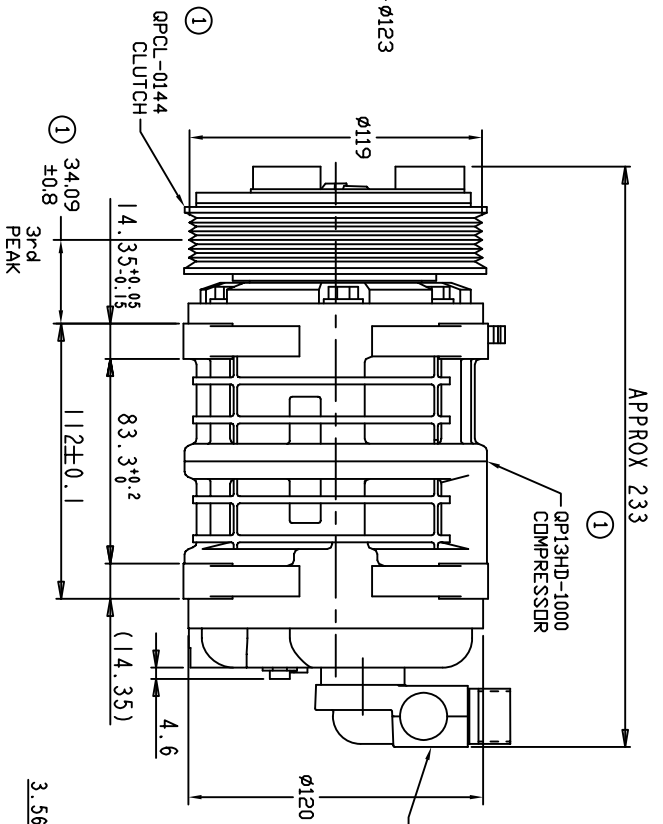
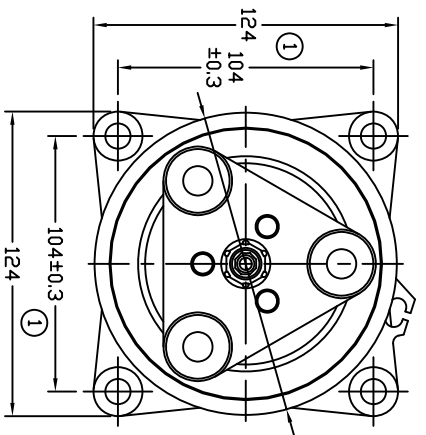


REVISIONS		DATE	APPROVED
CHANGE ORDER	LTR	DESCRIPTION	
009035	1	ADDED TOLERANCES & PART NOS	09/10/09



TERMINAL LEAD DETAIL



CLUTCH SPECIFICATIONS:

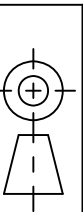
- VOLTAGE..... 12 VDC
- BELT..... P/V6
- STATIC TORQUE.....
- INITIAL AFTER BURNISHING..... 35 Nm (3.5 Kgfm)
- MAX POWER CONSUMPTION..... 49 Nm (5 Kgfm)
- ROTATION DIRECTION..... CW OR CCW
- WEIGHT..... 2.28 Kg

COMPRESSOR SPECIFICATIONS:

- MODEL..... QP13HD
- NUMBER OF CYLINDERS..... 6
- BORE X STROKE..... 36 X 21.4 mm
- DISPLACEMENT..... 131 cm³/REV
- SPEED RANGE..... 700 - 6000 RPM
- ROTATION DIRECTION..... CW OR CCW
- REFRIGERANT..... R-134a
- LUBRICANT..... PAG 46 150+20 cm³
- WEIGHT..... 4.5 Kg

UNLESS OTHERWISE SPECIFIED DIMENSIONS ARE IN MM. PER INTERPRET DIM AND TOL. PER ASME Y14.5M - 1994

THIRD ANGLE PROJECTION



CAD GENERATED DRAWING; DO NOT MANUALLY UPDATE

DRAWN: GLB DATE: 08/22/08

CHECKED: APPROVED: ENG APPVL

TITLE: COMPRESSOR ASSEMBLY
 QP13HD V-3/4 7/8
 P/V6 119mm 12V 3-EYE

SCALE: NONE

SIZE: A CODE: IDENT NO: DWG NO: QP13-1144 REV: 1

SHEET 1 OF 1



A 6 5 4 3 2 1