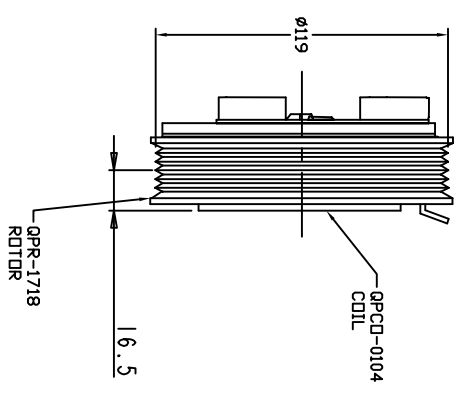
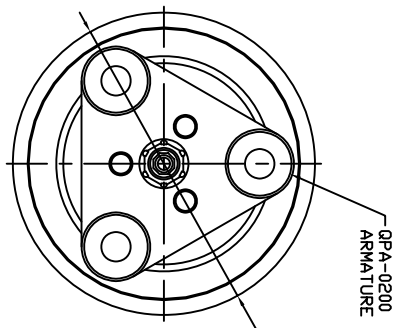
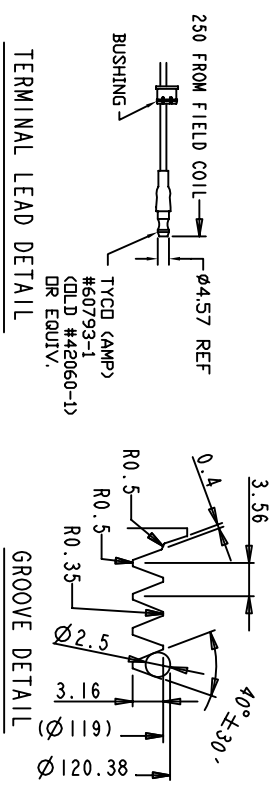


REVISONS				
CHANGE ORDER	LTR	DESCRIPTION	DATE	APPROVED



- CLUTCH SPECIFICATIONS:**
- VOLTAGE..... 24 VDC
  - BELT..... PV6
  - STATIC TORQUE  
INITIAL..... 35 Nm (3.5 Kgfm)  
AFTER BURNISHING..... 49 Nm (5 Kgfm)
  - MAX POWER CONSUMPTION..... 45W @ 25°C
  - ROTATION DIRECTION..... CW OR CCW
  - WEIGHT..... 2.28 Kg



UNLESS OTHERWISE SPECIFIED  
DIMENSIONS ARE IN MM. PER  
INTERPRET DIM AND TOL. PER  
ASME Y14.5M - 1994

THIRD ANGLE PROJECTION



TITLE  
CLUTCH 08-16

PV6 119MM 24VDC 3-EYE

SIZE A CODE IDENT NO DWG NO QPCL-0153 REV

FINISH	+	+
CHECKED	+	+
APPROVED	+	+
ENG APPVL	+	+

SCALE NONE SHEET 1 OF 1